

# **Desktop POS Printer Bluetooth Connection Manual**

---

(Rev.1.0)

**POS80 Series**

# Table of Contents

1. MANUAL INFORMATION.....	1
2. PRECAUTIONS.....	1
3. BT INFORMATION ON SELF-TEST PAGE.....	1
4. GENERAL SEQUENCE FOR BLUETOOTH CONNECTIONS.....	2
5. BLUETOOTH CONNECTION INSTRUCTIONS.....	3
5.1 Bluetooth - Utility Tool.....	3
5.2 Bluetooth - Windows Driver.....	11

## 1. Manual Information

This Bluetooth Connection Manual provides information on the connection of Bluetooth enabled devices (PDAs, PCs, etc.) with the printer.

We maintain ongoing efforts to enhance and upgrade the functions and quality of all our products. In following, product specifications and/or user manual content may be changed without prior notice.

## 2. Precautions

2-1 To connect the printer with another device via Bluetooth, the devices must be within 10m of one another. The connection is broken if the distance between devices exceeds 10m.

2-2 The maximum separating distance may be shortened if transmission obstacles, such as cement walls, are present.

2-3 If a device (such as a microwave oven, wireless LAN, etc.) that uses the same frequency is present, transmission may be interrupted. Separate the printer and Bluetooth-enabled device from such interrupting devices by a distance of at least 5m.

## 3. BT Information on Self-Test Page

Following information is an example from the self-test page of a printer:

Information on self-test page	Remark
<b>BT Version:</b> 35e_r1589	I435e indicates the BT module. R1589 indicates the version of BT program.
<b>BT Name:</b> BT Printer	"BT Printer" will be shown in your upper devices when it is connected successfully with the printer via Bluetooth.
<b>Simple Pairing:</b> Enable	<ul style="list-style-type: none"> <li>This can be set in utility tool, refer to the detail on page 18 of this manual.</li> <li>When enable the "simple pairing", the password is unnecessary for connecting with the printer via BT; When disable the "simple pairing", the default password "1234" should be input to connect with the printer via BT.</li> </ul>
<b>BT Password:</b> NONE	
<b>BT Svcmask:</b> 1010	Indicates the BT service number. <i>(Only for POS80D/POS80E)</i>
<b>Applet Wechat:</b> Enable	Applet Wechat can be used. <i>(Only for POS80D/POS80E)</i>
<b>BT Multiconn:</b> Enable	The printer can be connected with multiple upper devices at the same time via Bluetooth (7 devices with Android system and 1 device with IOS system can be connected with the printer via BT at the same time.) <i>(Only for POS80D/POS80E)</i>
<b>BluetoothID:</b> 00:15:83:B9:3C:0D	When there are more than one printers with BT function available for connection, you can find the printer that you want to connect with by checking the Bluetooth ID.

## 4. General Sequence for Bluetooth Connections

Bluetooth connection methods vary by device. The following is the general sequence for Bluetooth connections, provided for reference purposes.

4-1 Turn on power of each device

- PDAs, PCs (Bluetooth Dongle), Printers, etc.

4-2 Run a Bluetooth connection program on the PDA or PC.

4-3 Search for the peripheral with which to establish the connection.

- Search for the printer.

4-4 Register this Printer from the search results.

- If a security setting is enabled, register after entering the PIN Code.

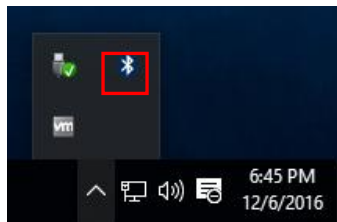
(PIN Code=Pass Key: password of the Bluetooth device, Default code: 0000)

- You can check the Bluetooth pairing password through self-inspection by printed page view.  
(Refer to the user's manual for more detail)

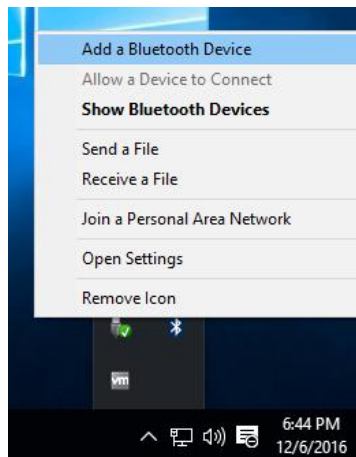
## 5. Bluetooth Connection Instructions

### 5.1 Bluetooth - Utility Tool

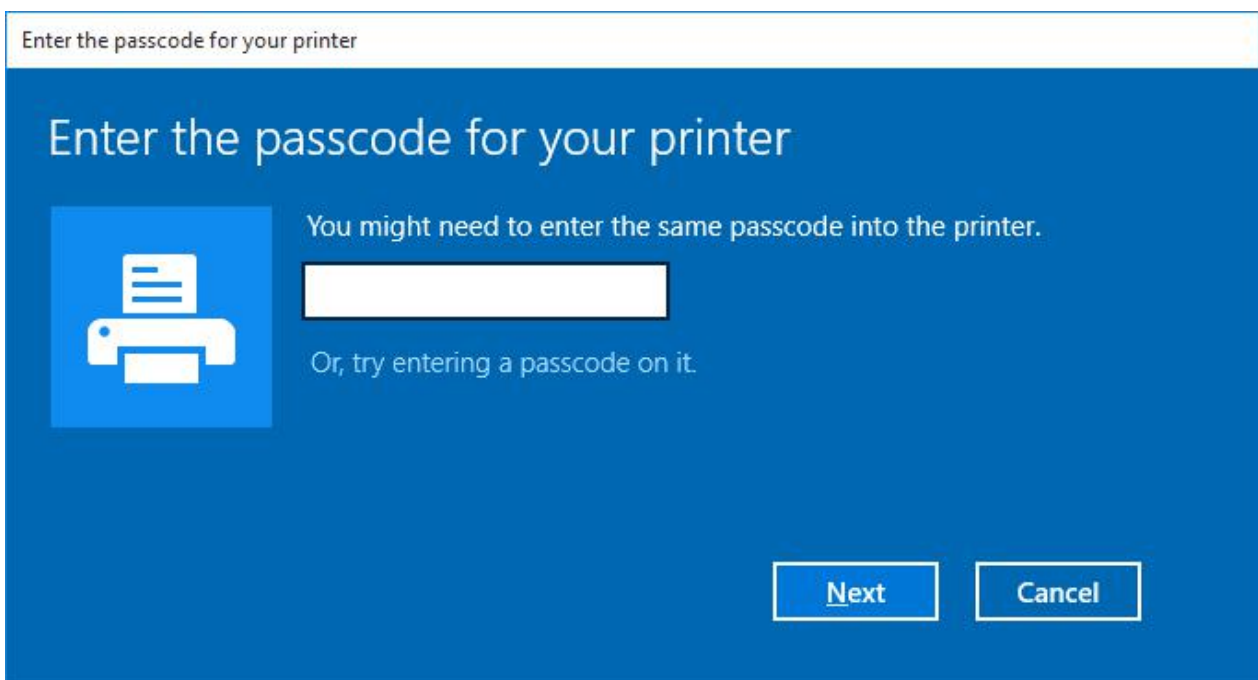
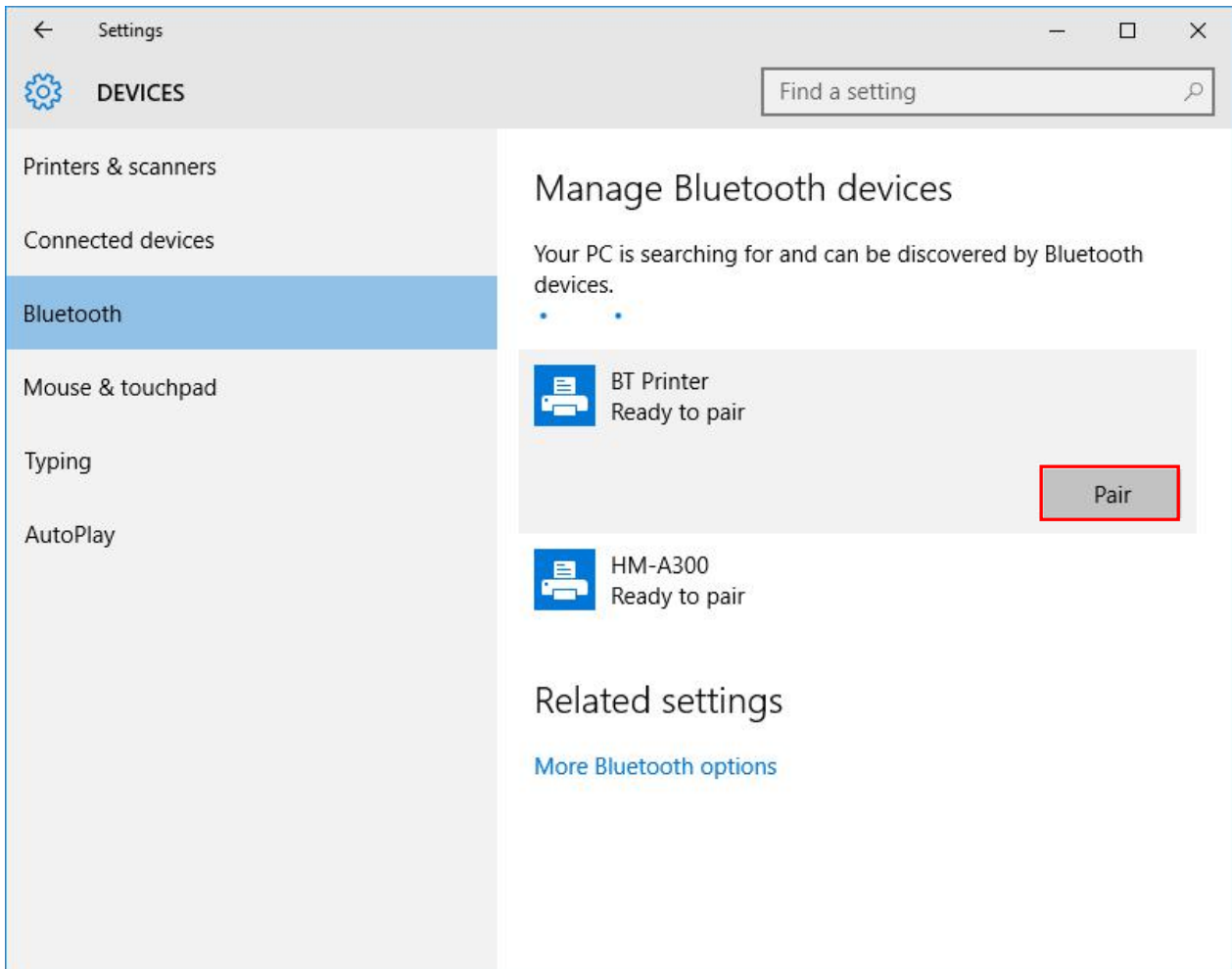
1. Turn on the printer.
2. Turn on the upper device. The Bluetooth icon will show at the lower right of the screen. (If the upper device is not configured with Bluetooth function, you need to insert a Bluetooth Dongle into its USB connector.)



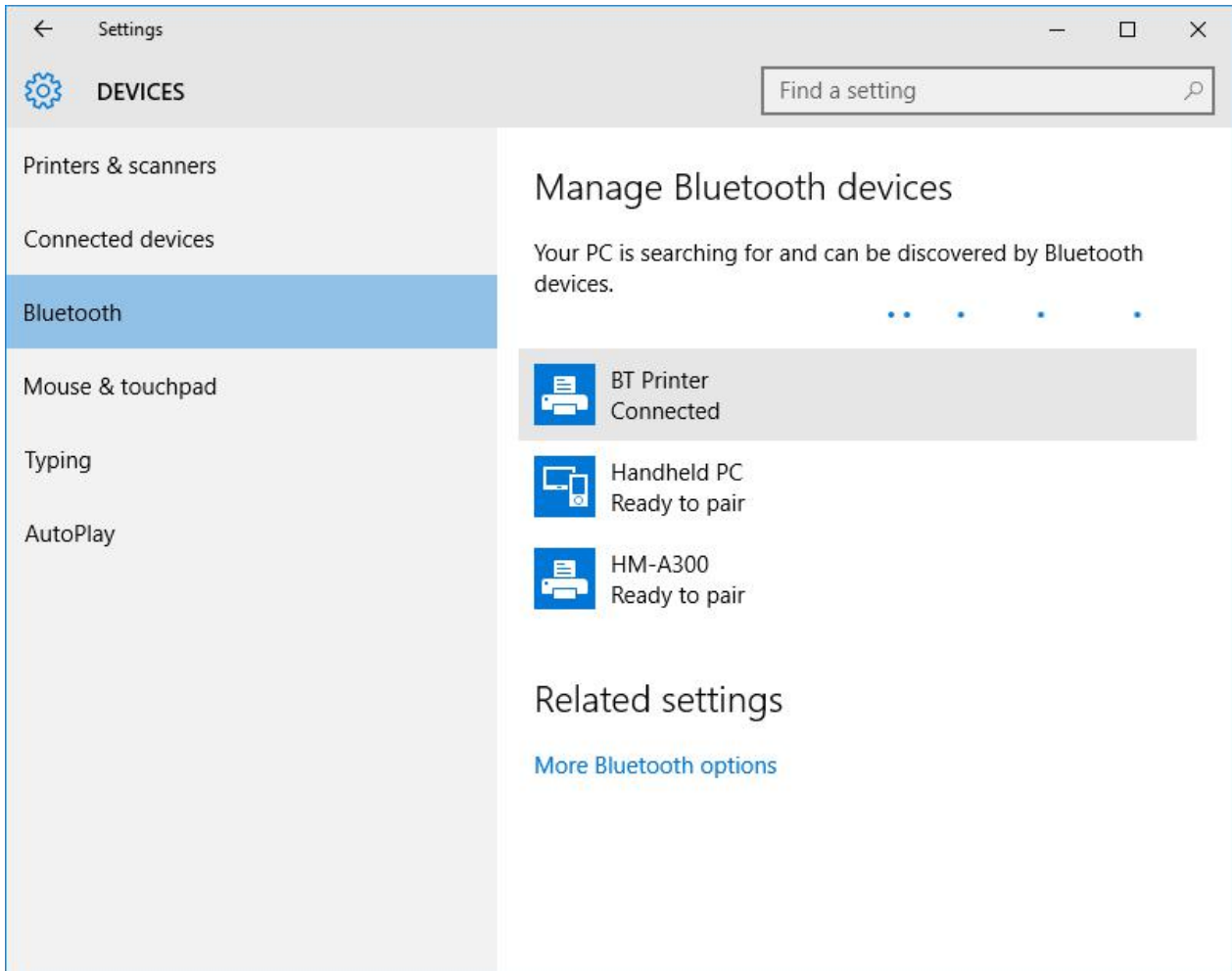
3. Right click the icon, choose "Add a Bluetooth Device".



4. Choose “Bluetooth”, wait until the show is ready for Bluetooth pairing. Choose the right model then click “Pair”, if the printer has a password enter the password for pairing. (The password can be obtained from the self-test page of printer)



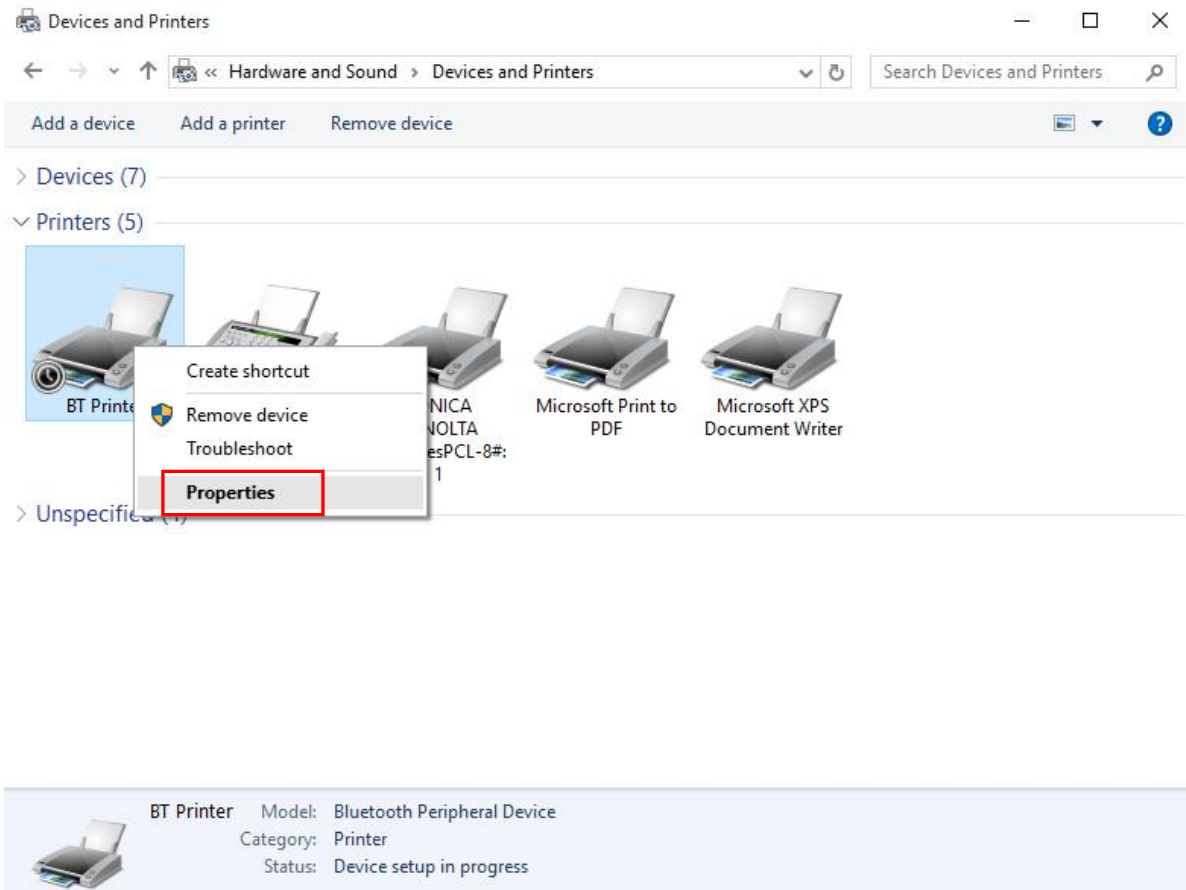
5. The paired connection is successfully displayed as shown below.



6. Under the “Devices and Printers”, you can see the corresponding Bluetooth icon.

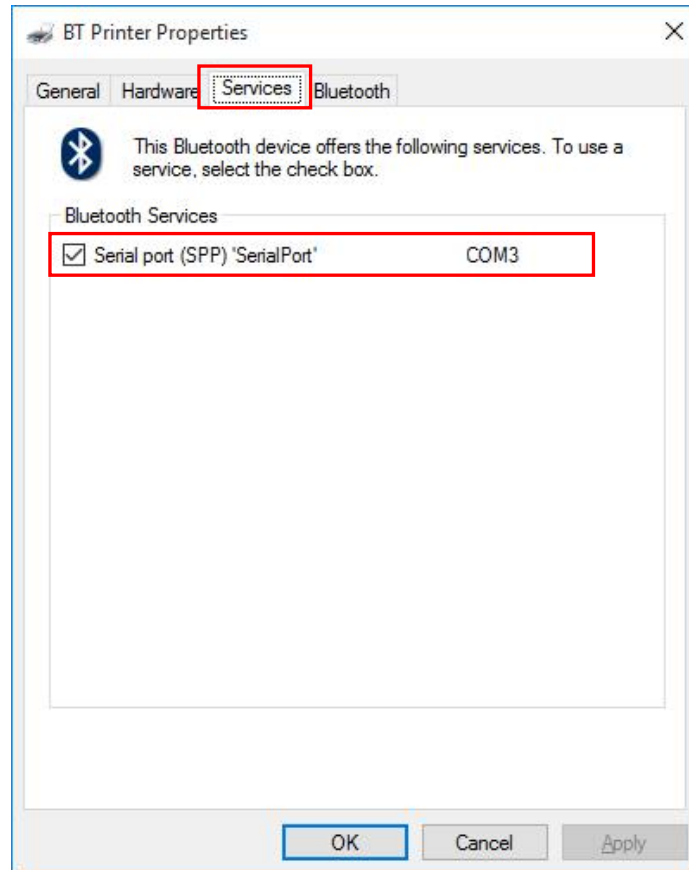


7. Right click the Bluetooth icon, and choose “Properties”.



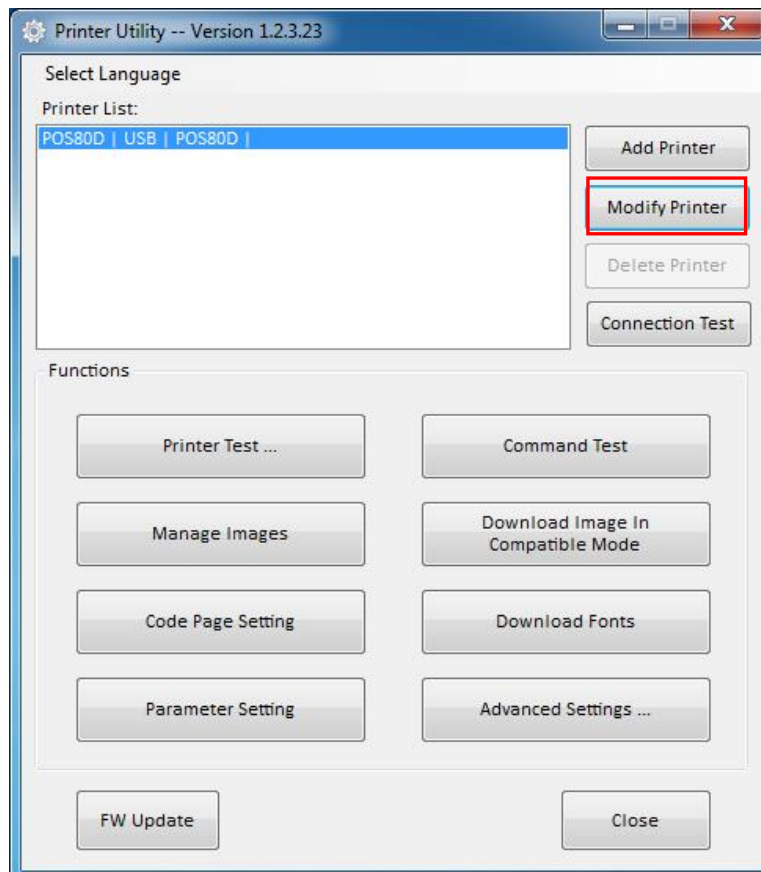


8. In the Bluetooth properties, choose "Services", that is connected to a Bluetooth port.

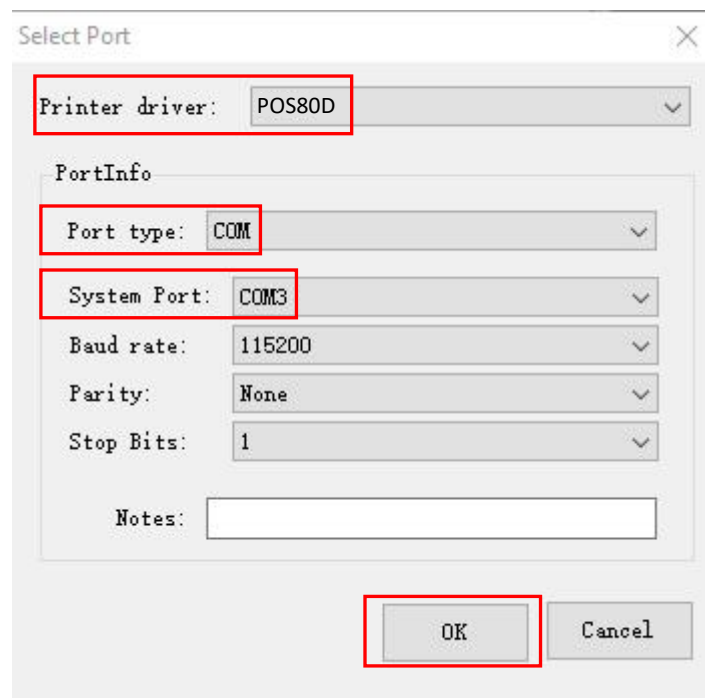


9. Install the Utility Tool on the upper device. (Please refer to the Utility Tool Instruction.)

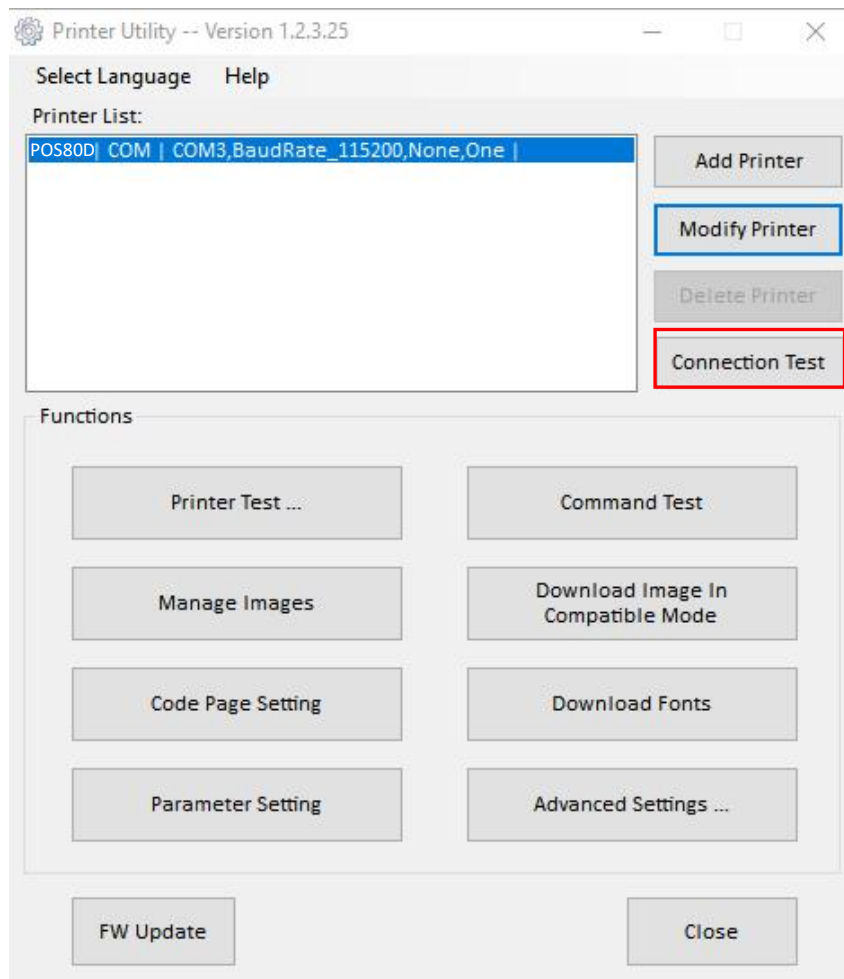
10. Open the printer utility, and click "Modify Printer".



11. Choose the “Printer driver”, for example, “POS80D”; Choose “COM” for “Port type”; Choose “COM3” for “System Port”, then click “OK”.



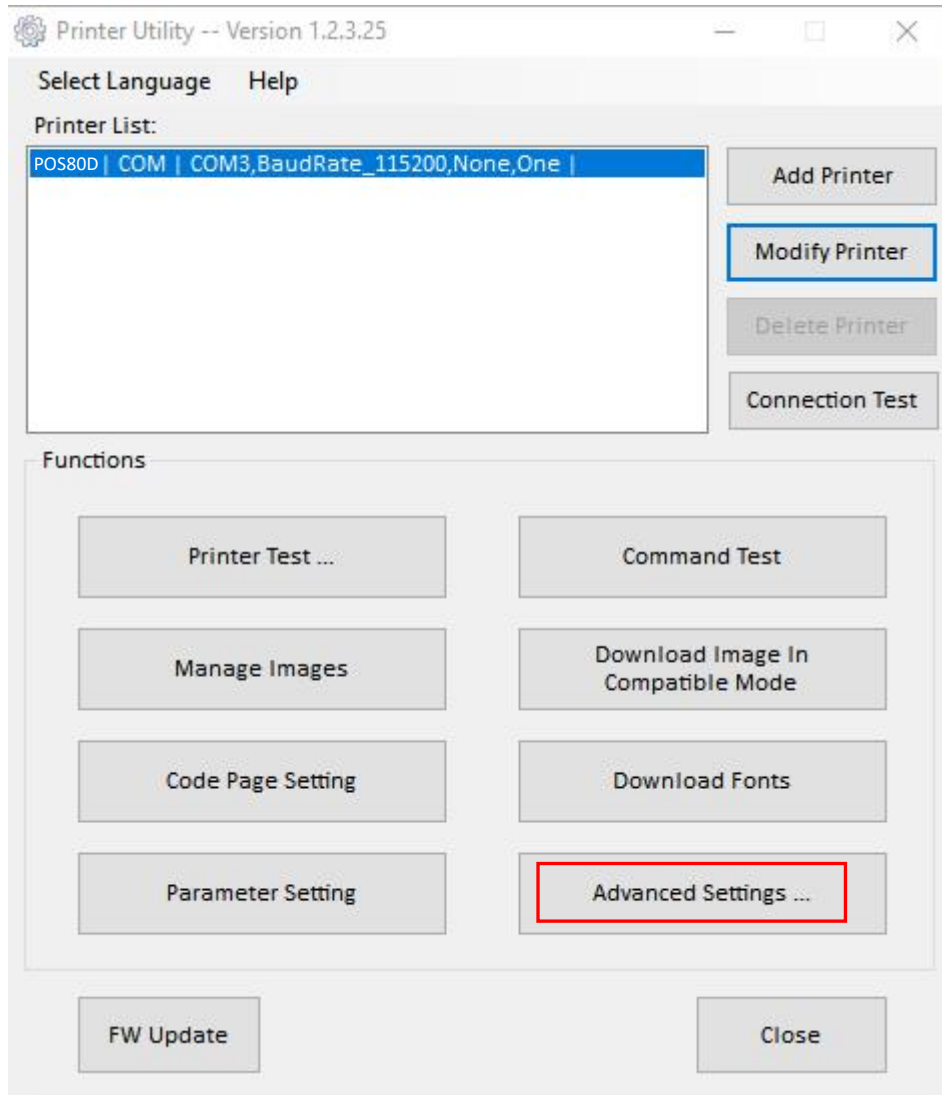
12. Click the “Connection Test”.



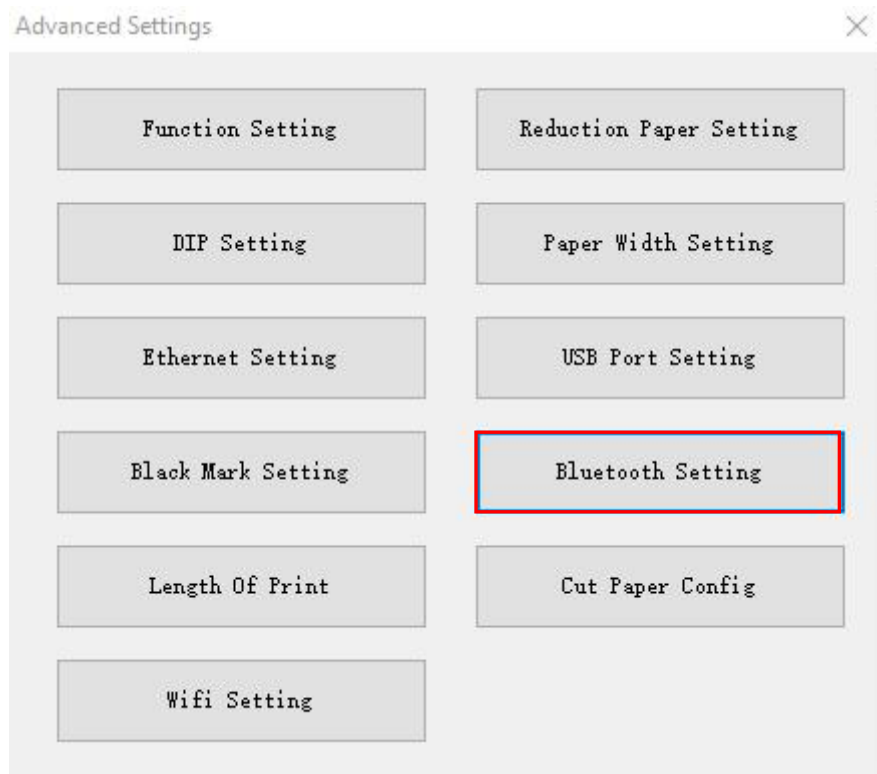
13. The printer is successfully connected through Bluetooth.



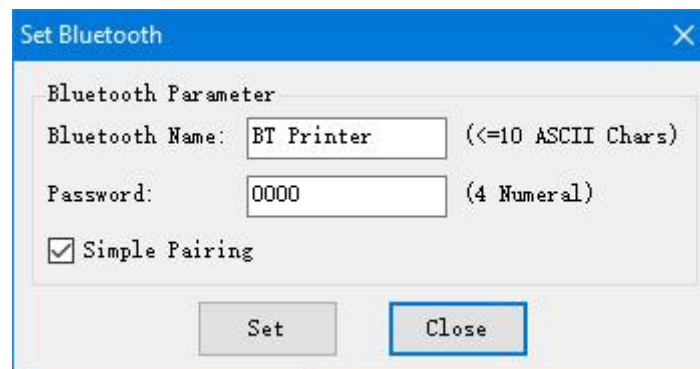
14. Click "Advanced Settings".



15. Click "Bluetooth Setting".

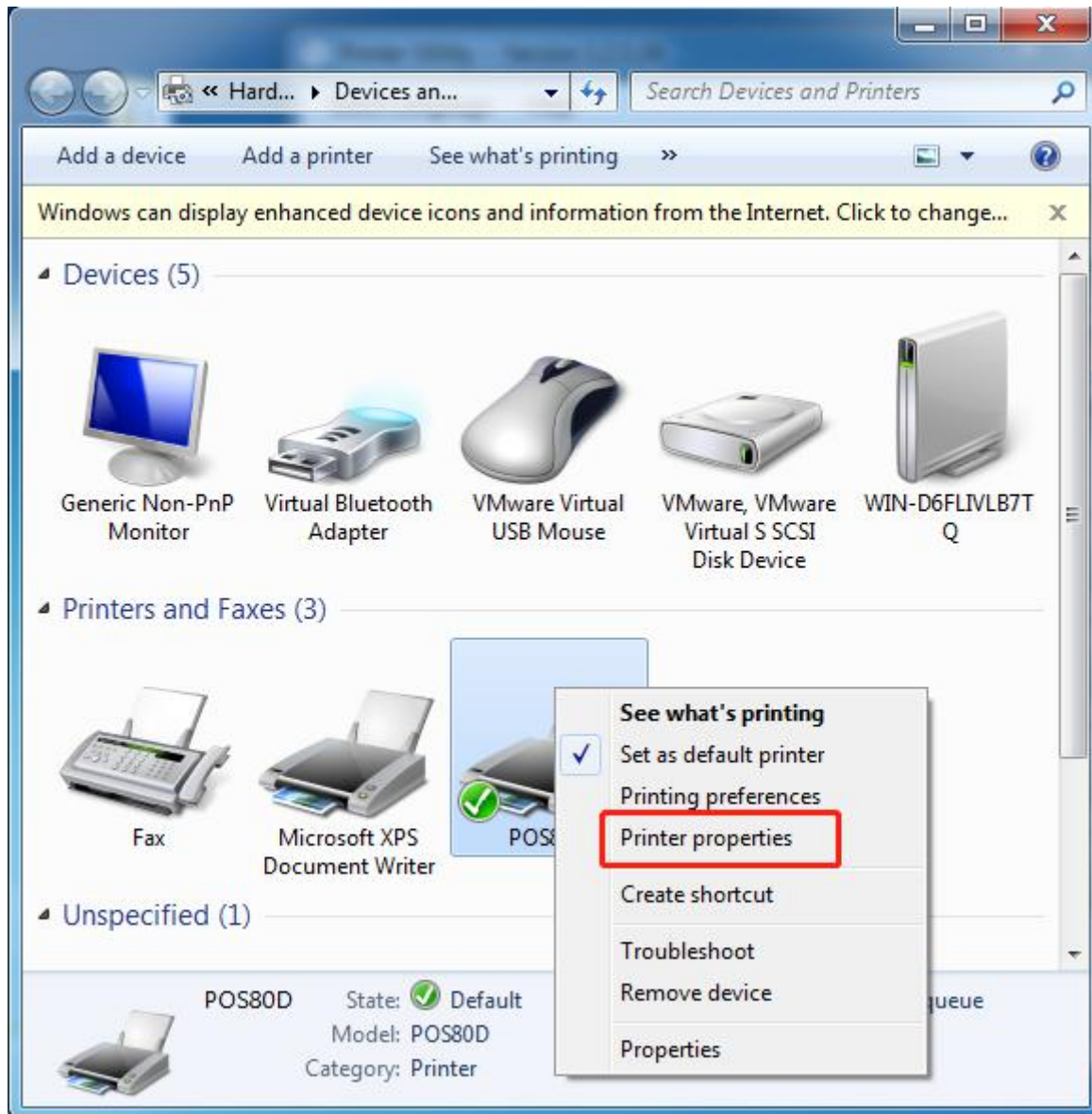


16. When the "simple pairing" is checked, the printer does not need to enter the Bluetooth password to connect, when the "simple pairing" is not checked, the printer needs to enter a Bluetooth password to connect.

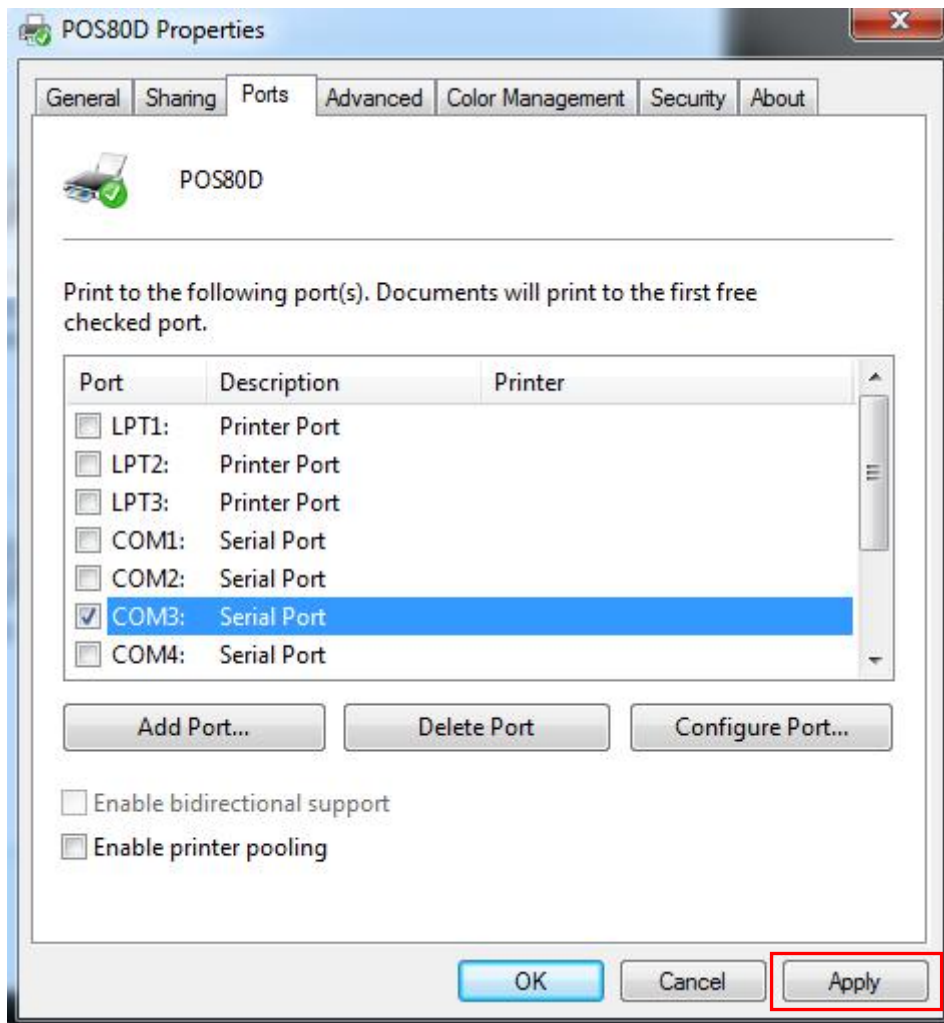


## 5.2 Bluetooth - Windows Driver

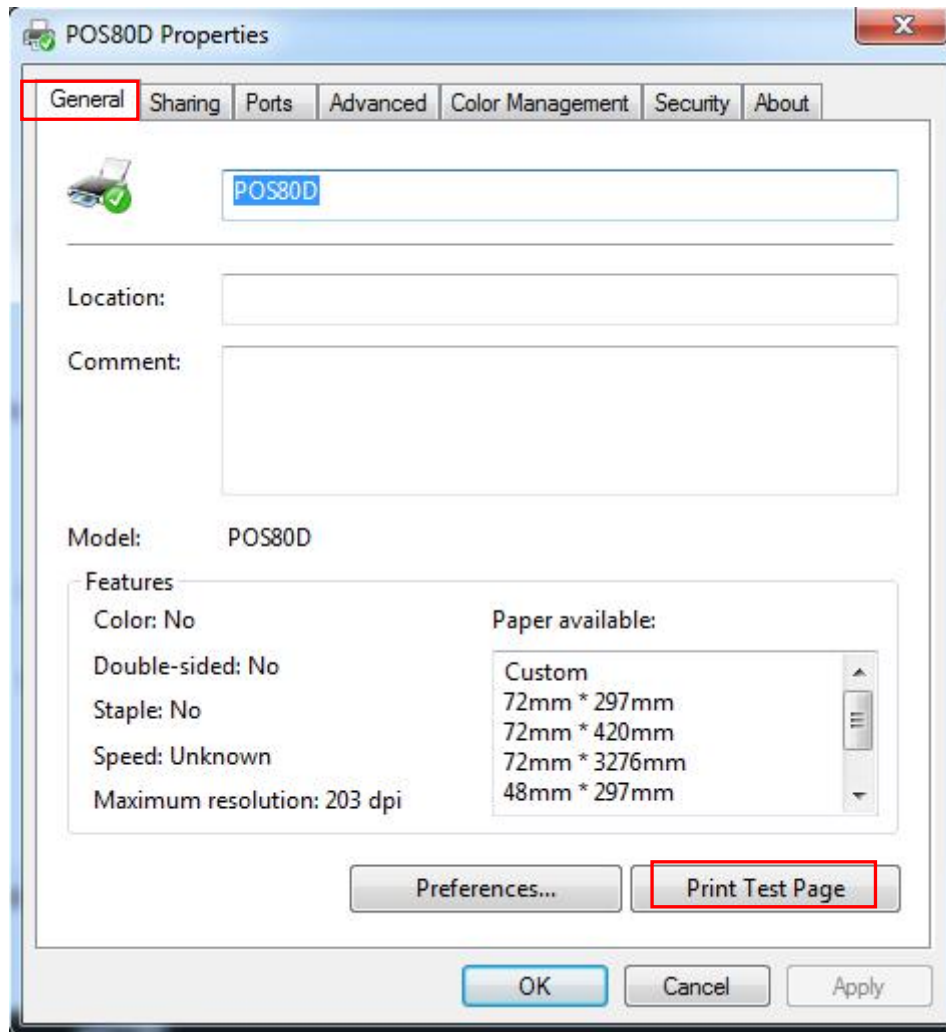
1. Take the same steps of “1. ~ 8.” in Chapter 5.1.
2. Install the Windows Driver program. (Please refer to the Windows Driver Manual)
3. Right click the Bluetooth printer icon, and choose “Printer Properties”.



4. In the “Printer properties”, choose “port”, select the port of step 8 (in chapter 5.1), then click “Apply”.



5. Choose “General”, then click “Print Test Page”.



6. If the print test page can print normally, the following figure is displayed; if fails, check whether Bluetooth is disconnected or the corresponding COM port is occupied.

